



**CHORLEY, SOUTH RIBBLE & WEST LANCASHIRE CHILDREN'S PARTNERSHIP
BOARD
NOTES OF MEETING HELD ON THURSDAY, 10 DECEMBER 2015 AT TOWN HALL,
MARKET STREET, CHORLEY, PR7 1DP**

Additional papers presented at the meeting (attached)

- (a) Infant Mortality presentation
- (b) Prevent Duty presentation
- (c) Ofsted presentation
- (d) Young Enterprise presentation

This page is intentionally left blank

Introduction to Infant Mortality Prevention



Overview

Presentation will focus on:

- What is Infant Mortality and why bother?
- How does it relate to population health and wellbeing?
- Why and how is it measured?
- What can we do?

Starting Well – Normal Child Development

Giving Every Child the Best Start in Life



Infant Mortality Facts (1)

- It's a sensitive measure of the overall health of a population
- It provides an important measure of the wellbeing of infants, children and pregnant women
- The Infant Mortality Rate (IMR) has long been regarded as an important measure of the health of a community
- It calculates the numbers of deaths in infants under 1 year as a proportion of the number of live births in the same population during the same period of time – usually a year
- Directly Standardised Rate (per 1,000 live births) so can compare at ward level
- Reducing infant mortality contributes significantly to tackling health inequalities

Infant Mortality Facts (2)

- It's customary to consider deaths in infancy in a number of different time periods e.g. Neonatal mortality rate (deaths during first 28 days of life per 1,000 live births)
- The death of an infant before it's first birthday (doesn't include termination, miscarriage or stillbirth)
- Massive inequalities – in the 21st Century in a developed Country like England, why are babies who live in the least deprived parts of our population more likely to make it to their first birthday than those who live in the most deprived?
- Internationally and nationally we know what's preventable and modifiable – but know less at the sub-locality level (causes of the causes)
- The various elements that lead to these differences in neighbourhoods and communities need to be made explicit and acted upon – make it everybody's business

Three programmes of interventions

The objectives of our programmes are:

Starting Well

- To promote healthy pregnancy
- To reduce infant mortality
- To Reduce childhood obesity
- To support children with long term conditions
- To support vulnerable families and children

Living Well

- To promote healthy settings, healthy workforce and economic development
- To promote mental wellbeing and healthy lifestyles
- To reduce avoidable deaths
- To improve outcomes for people with learning disabilities

Ageing Well

- To promote independence
- To reduce social isolation
- To manage long term conditions and dementia
- To reduce emergency admissions and direct admissions to residential care settings
- To support carers and families

Progress measured through indicators in the four national outcomes frameworks

What will we do?

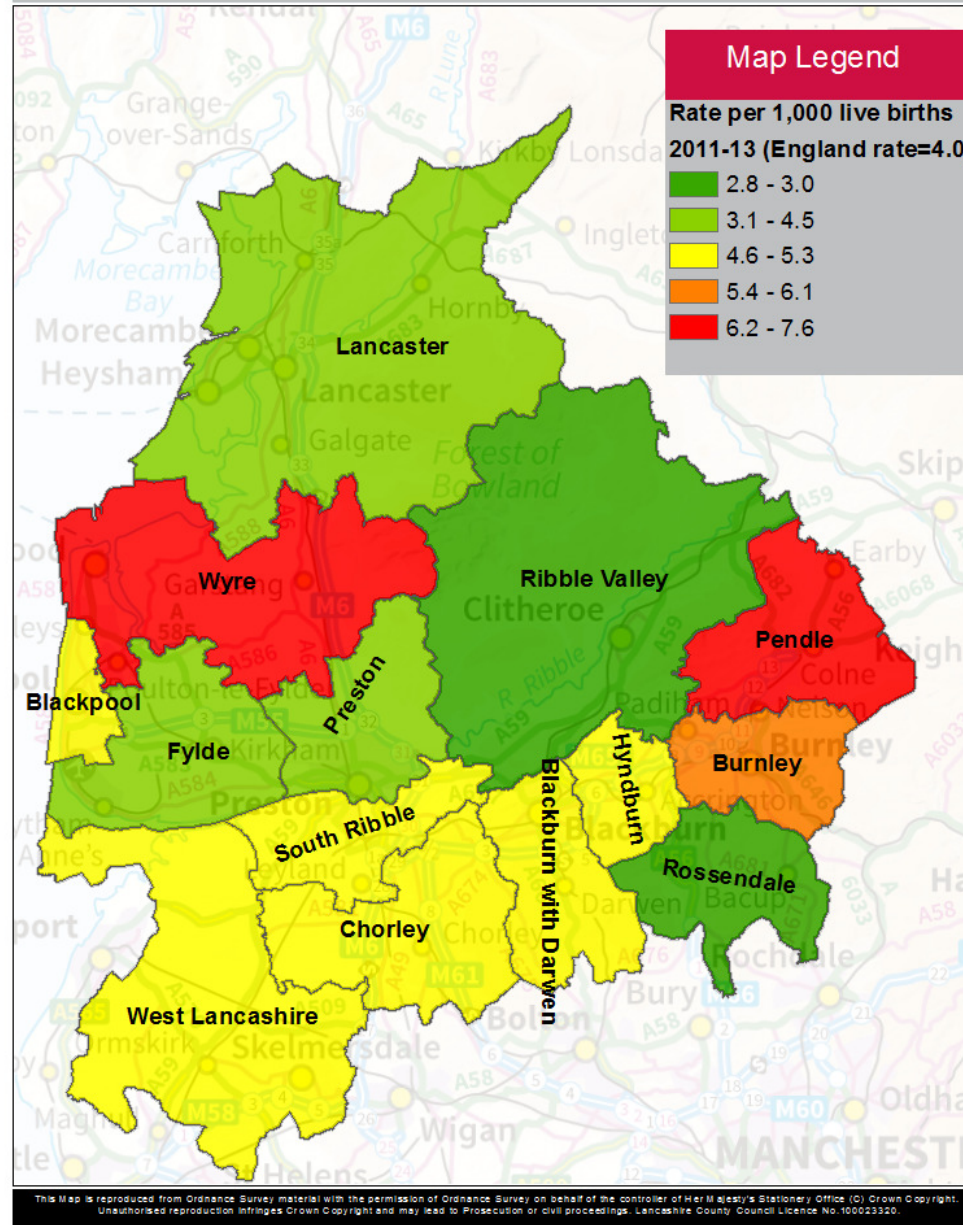
In each of our three programmes of interventions we will:

- Improve health and care services
- Improve health behaviours
- Address the wider determinants of health and wellbeing

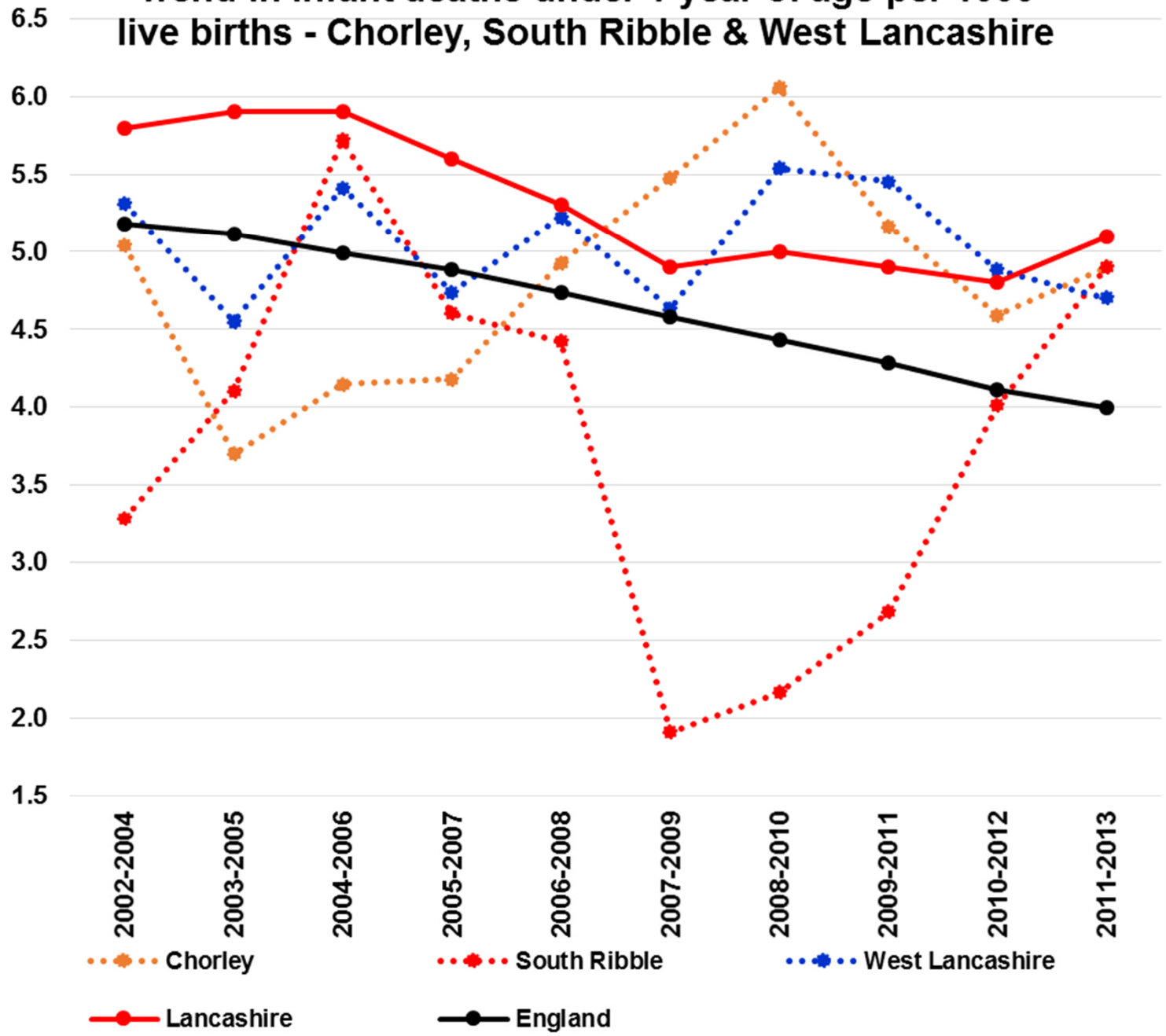
Infant mortality rate, 2011-2013

Map created : 04/09/2015

Map scale : 1:383,217



Trend in infant deaths under 1 year of age per 1000 live births - Chorley, South Ribble & West Lancashire



www.lancashire.gov.uk
Source: PHOF



Trend in Ch. SR WL partnership board IMR

	2002-2004	2003-2005	2004-2006	2005-2007	2006-2008	2007-2009	2008-2010	2009-2011	2010-2012	2011-2013	% change between 2002-04 and 2011-13	% change between 2010-12 and 2011-13
Chorley	5.0	3.7	4.1	4.2	4.9	5.5	6.1	5.2	4.6	4.9	-3%	7%
South Ribble	3.3	4.1	5.7	4.6	4.4	1.9	2.2	2.7	4.0	4.9	49%	22%
West Lancashire	5.3	4.5	5.4	4.7	5.2	4.6	5.5	5.5	4.9	4.7	-11%	-4%
Lancashire	5.8	5.9	5.9	5.6	5.3	4.9	5.0	4.9	4.8	5.1	-12%	6%
England	5.2	5.1	5.0	4.9	4.7	4.6	4.4	4.3	4.1	4.0	-23%	-2%

Significantly above England
 Similar to England
 Significantly below England

Source: PHOF

www.lancashire.gov.uk



Number of infant deaths (3 year rolling)

	2002-04	2003-05	2004-06	2005-07	2006-08	2007-09	2008-10	2009-11	2010-12	2011-13	
Chorley	17	13	15	15	18	20	22	19	17	18	↑
South Ribble	11	14	20	16	16	7	8	10	15	18	↑
West Lancashire	18	16	19	17	19	17	20	19	17	16	↓
Total (Ch SR WL)	46	43	54	48	53	44	50	48	49	52	↑
% of Lancashire	21%	19%	23%	22%	24%	22%	24%	24%	25%	25%	
Lancashire	215	229	234	222	217	204	207	203	200	206	↑

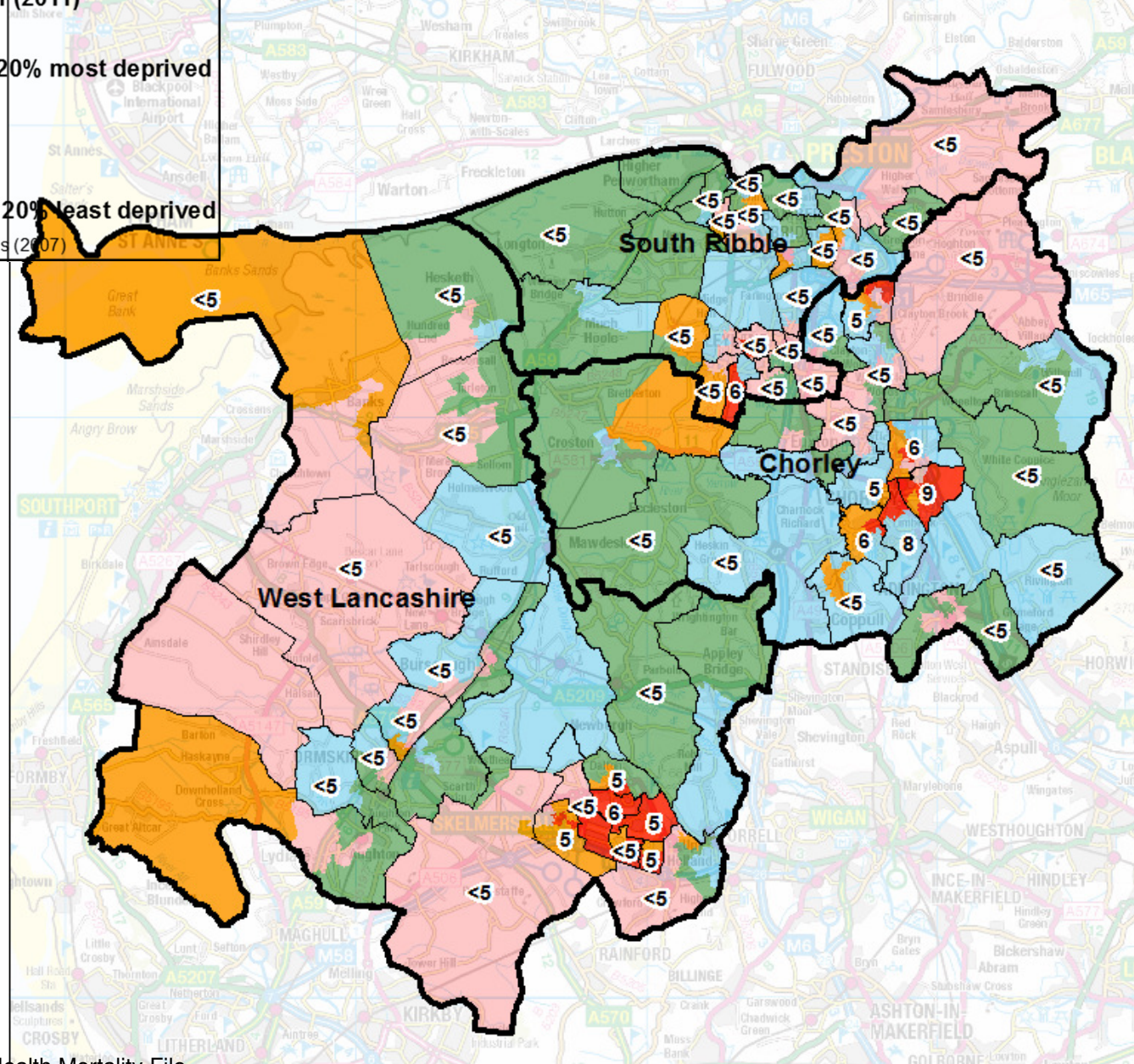
Source: PHOF

www.lancashire.gov.uk

Chorley, South Ribble & West Lancashire CPB – number of infant deaths by ward (05-14) and deprivation (2015)

IMD 2015 Quintile
SOA - lower level (2011)
IMD2015

█	Quintile 1 - 20% most deprived
█	Quintile 2
█	Quintile 3
█	Quintile 4
█	Quintile 5 - 20% least deprived
	Ward boundaries (2007)



Infant deaths in Ch., SR & WL

- IMR **similar** to England IMR (2011-2013)
- Highest **number** of infant deaths in 2004-06 (n=54)
- **80%** infant deaths White English/Welsh/Scottish/Northern Irish/British ethnicity
- **6%** infant deaths Asian/Asian British ethnicity (CDOP 08/09-13/14)
- **Prematurity, Parental mental health, alcohol/substance misuse & smoking** amongst common **risk factors** recorded for infant deaths (Source: CDOP 08/09-13/14)
- **28%** of deaths (05-14) within 20% most **deprived** areas, nationally

What works?

- Partnership working to tackle:
 - Substance Misuse – drugs and alcohol
 - Adult Smoking Prevalence
 - Domestic Abuse
 - Teenage Pregnancy
 - Genetics/congenital abnormalities
 - Low breast feeding rates
 - Healthy weight and nutrition
 - Mental health and wellbeing

Improvements

Districts which have experienced considerable improvement:

- West Lancashire (11%↓ between 02-04 & 11-13)

Additional efforts

Districts which are worthy of additional effort:

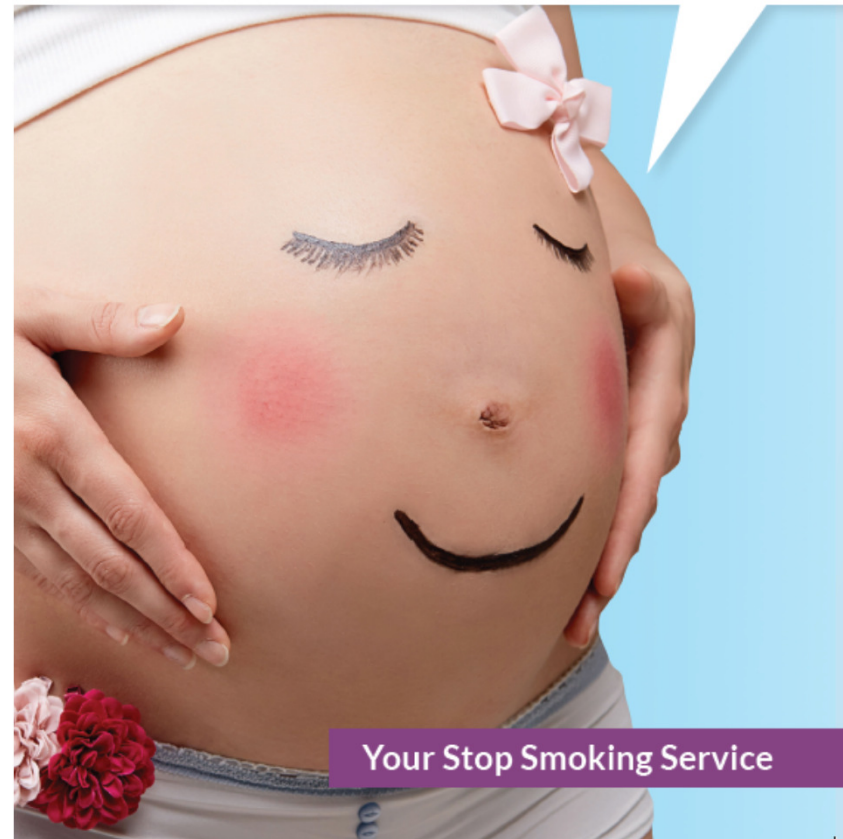
- **South Ribble** (49%↑ between 02-04 & 11-13 & 22%↑ between 10-12 and 11-13)

Smoking during pregnancy increases the risk of infant mortality by around 40% and causes up to 2,200 premature births, 5,000 miscarriages and 300 perinatal deaths in the UK every year. It has been estimated that a 10% reduction in infant and foetal deaths could be achieved if all pregnant women stopped smoking.

Lancashire County Council has funded the 'Supporting a Smokefree Pregnancy Scheme' during 2015/16, whereby pregnant smokers and their significant other (e.g. partner, family member or friend) attending the Stop Smoking Service receive additional support to quit and Love2Shop vouchers for every month they remain smokefree up to 8 weeks post-partum.

The Quit for Two campaign was launched in March to increase awareness of the risks of smoking during pregnancy and encourage pregnant smokers and their partners to access the Stop Smoking Service to quit.

Quit for you Quit for two



quitfortwo.co.uk

Central, East & West Lancs 0800 328 6297

- The Quit for Us App was launched on 21 September and can be downloaded free of charge from the App Store and Google Play. This aims to support pregnant smokers during their quit journey and includes a distraction name game, savings calculator, interactive myth busting video and quiz and helpful hints and tips to stay smokefree.
- The Smoking at Time of Delivery (SATOD) rate in West Lancashire decreased from 14.4% in 2013/14 to 11.5% in 2014/15. It remains slightly higher than the national average (11.4%).

Elsewhere in Lancashire . . .

In Preston and Chorley there have been community development projects set up to spread positive messages about baby safety. “Baby Clothes Swap Shops” are being run by volunteers working in partnership with:

- Local children's centres
- Health Visitors
- Housing Associations
- District Councils
- Churches



C.A.K.E

Children Advice and Knowledge

Exchange Day!

Free refreshments!

Safe guarding advice!

Finished with your baby bath?

Need a high chair ?

Swap your baby items with each other!

**At Clayton Brook
village hall.**

Monday, 24th August!

1:00 - 4:00



In East Lancashire there has been significant work to engage with local services to promote the message:

“Infant mortality is everybody’s business”

Pledge events have taken place in Hyndburn and Rossendale – participating organisations agree to:

- Promote the ‘Safer Sleep for Baby’ campaign
- Encourage mothers to breastfeed their babies
- Discuss the Lancashire Smoke Free Homes schemes and signpost to the Stop Smoking Service
- Encourage early access
- Raise awareness of the importance of maintaining maternal healthy weight promoting Change4Life and Healthy Start
- Signpost pregnant women, parents and families to Children’s Centre.



‘Reduction in Infant Mortality is the responsibility of the whole of the community’

Reducing Infant Mortality is a major challenge for us in Rossendale. The death rate before the age of 1 year is higher than the regional and national average.

Infant Mortality is not just a health problem, it’s not just a parent’s problem - it is a community problem.

We,

pledge that we will

- Promote the ‘Safer Sleep for Baby’ Campaign messages
- Encourage mothers to breastfeed their babies
- Discuss the Lancashire Smoke Free Homes scheme and signpost to the Stop Smoking Service
- Encourage early access to antenatal care and education including ‘Blooming Bumps’ and ‘From Bump to Birth and Beyond’
- Raise awareness of the importance of maintaining maternal healthy weight promoting Change 4 Life and Healthy Start
- Signpost pregnant women, parents, and families to Children’s Centres

Signed on behalf of the organisation _____

Name _____ Date _____

Signed on behalf of Rossendale IMAG _____

Name _____ Date _____

Together we can reduce the number of babies dying unexpectedly in Rossendale each year.





Follow our six steps to safer sleep

- 1** Keep baby away from smoke, before and after birth.
- 2** Put baby in a cot, crib or Moses basket to sleep - never fall asleep with them on a sofa or chair.
- 3** Never fall asleep with baby after drinking or taking drugs/medication.
- 4** Put baby to sleep on their back with their feet to the foot of the cot.
- 5** Keep baby's head and face uncovered and make sure they don't get too hot.
- 6** Breastfeed your baby - support is available if you need it.

Find out more at www.lancashire.gov.uk and search 'safer sleep for baby'

Together we can reduce the number of babies dying unexpectedly in Lancashire each year.



Next Steps

- Identify a PH person in each of the 4 Central Locality districts to meet to consider the Infant Mortality Profiles in more detail
- In partnership agree a way forward based on 'the causes of the causes' to achieve the England average as a minimum

WRAP

(Workshop to Raise
Awareness of Prevent)

Part 1

WRAP

Aims:

Intended learning outcomes:

Gain an understanding of PREVENT to protect and support vulnerable individuals from radicalisation

Identify the changes in the roles and responsibilities

Introduction

WRAP is a Workshop to Raise Awareness of Prevent through Channel to a counter terrorist activity known as CONTEST.

Key Terms:

Contest / Prevent / Channel

CONTEST aims to reduce the risk we face from terrorism so that people can go about their lives freely and with confidence.

This is made up of the four Ps = Protect / Prepare / Pursue / and Prevent

Prevent:

Prevent is the Government's strategy to stop people becoming involved in violent extremism or supporting terrorism, in all its forms. Prevent works within the non-criminal space, using early engagement to encourage individuals and communities to challenge violent extremist ideologies and their behaviours.

Channel:

Channel is an early intervention multi-agency process designed to safeguard vulnerable people from being drawn into violent extremist or terrorist behaviour.

Channel works in a similar way to existing safeguarding partnerships aimed at protecting vulnerable people.

Counter-Terrorism & Security Act 2015

- The Counter Terrorism and Security Act 2015 has introduced the Prevent Duty for various bodies including all FE colleges, adult education providers and independent learning providers to carry out PREVENT duties.
- The Prevent Duty has "due regard to the need to prevent people from being drawn into terrorism" Anti Terrorism and Security Act 2015 : Schedule 3, Section 21

Counter-Terrorism & Security Act 2015

Prevent duties include:

- Establishing a single point of contact for Prevent
- Assess risks of learners, vulnerable adults being drawn into terrorism
- Develop and action plan to reduce risk
- Train staff (and learners) to recognise radicalisation and extremism
- Refer vulnerable people to the Channel process
- Prohibit extremism speakers and events that promote radical ideology

Contest

Counter-terrorism methods

Counter-terrorism refers to the practice, techniques, and strategies that governments, military, police and business organisations use to combat or prevent terrorism.

- The UK uses a strategy named **CONTEST** that aims to reduce the risk to the UK and its interests overseas from terrorist attack.

CONTEST has four areas of work:

- **Prevent** – aims to stop people becoming terrorist or supporting terrorism. **This is about taking action before any criminal activity has taken place**
- **Pursue** – aims to disrupt and stop terrorists attacks, wherever possible by prosecuting those who have engaged in terrorist related activity
- **Protect** – aims to strengthen our protection against a terrorist attack in the UK or interest overseas and reduce our vulnerability
- **Prepare** – aims to mitigate the impact of a terrorist attack where that attack cannot be stopped

Government Counter Terrorism Strategy

CONTEST (4 P's)

PROTECT



Strengthen our protection against a terrorist attack

PREPARE



Mitigate the impact of a terrorist attack

PURSUE



Stop terrorist attacks

PREVENT: aims to stop people becoming terrorist or supporting terrorism.

This is about taking action before any criminal activity has taken place

Counter-Terrorism & Security Act

We all have:

“due regard to the need to prevent people from being drawn into terrorism”

This is done through a multi-agency approach through:

LOCAL AUTHORITIES

POLICE

COMMUNITY AND VOLUNTARY SERVICES

EDUCATION

PRISON SERVICE

YOUNG OFFENDING TEAMS

EMERGENCY SERVICES

UK BORDER AGENCY

HEALTH

SOCIAL SERVICES

ADULT AND CHILDREN SERVICES

PROBATION SERVICES

What is the current threat level?

- **Critical** – an attack is expected imminently
- **Severe** – an attack is highly likely
- **Substantial** – an attack is a strong possibility
- **Moderate** – an attack is possible, but not likely
- **Low** – an attack is unlikely

SEVERE

Terrorist Organisations

Al Ghurabaa
Al Shabaab
Boko Haram
 Hamas
 Hizballah
 Irish Republican
 Army
 ISIS / ISIL

Basque Homeland
& Liberty (ETA)
Haqqani Network
(HQN)
Lashkar e Tayyaba
(LT)
Tamil Tigers

Individual case studies

Anders Breivik

John Smith

Nicky Reilly

Younes Tsouli

Pavlo Lapshyn

Richard Reid

Liam Lyburd

Aqsa Mahmood

David Copeland

Timothy McVeigh

Robert Cottage

Michael Adebolajo

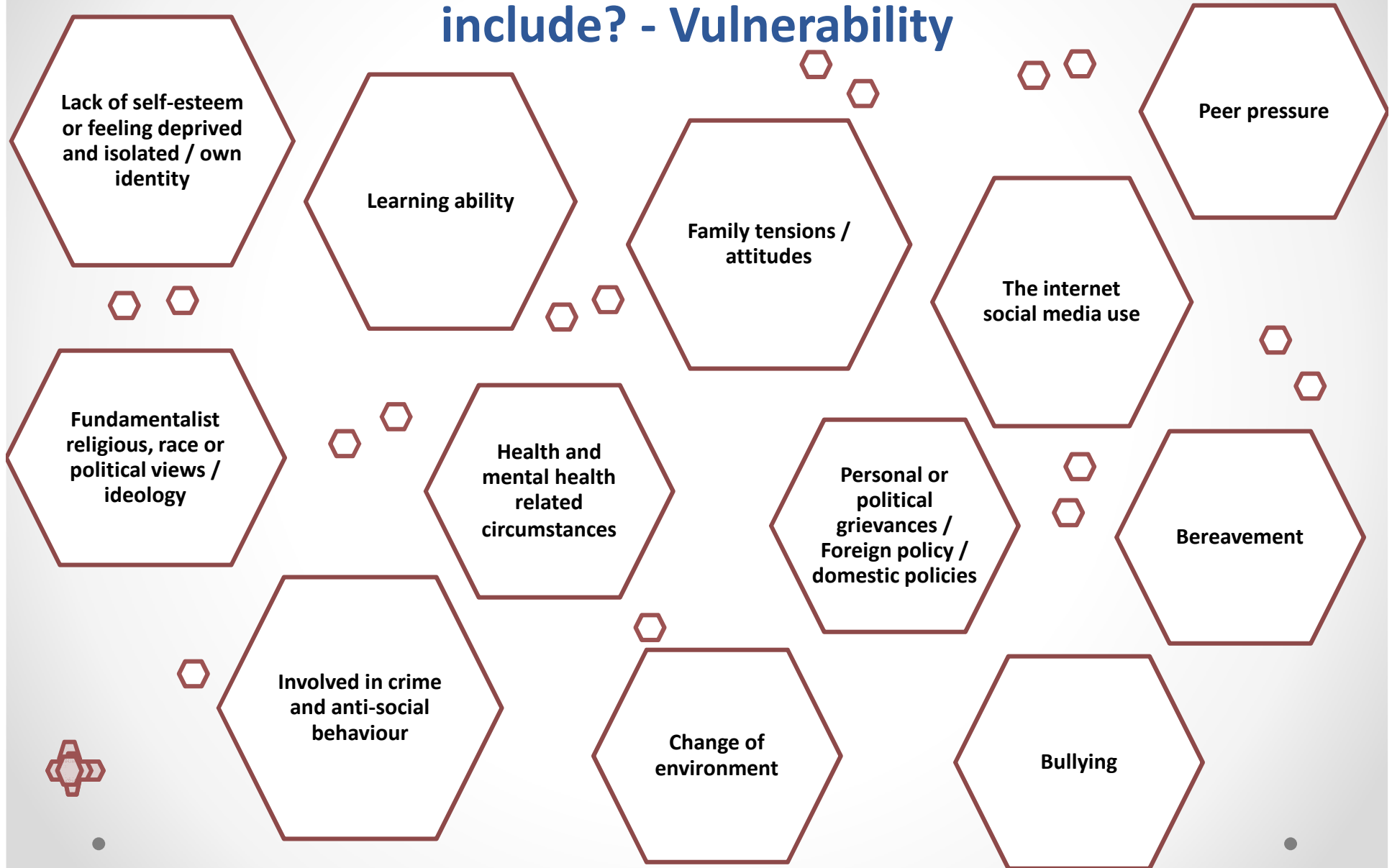
Hammaad Munshi

Neil Lewington

Mohammed Emwazi

Mark Colborne

There are many factors that make people vulnerable to being drawn to terrorism: They include? - Vulnerability



Contest Prevent and Channel

- **Gain an understanding of Contest Prevent and Channel**
- **Identify the changes in the roles and responsibilities of tutors**

Contest

UK Government Strategy

*“To reduce the risk to the UK,
and its interests overseas,
from terrorism
so that people can
go about their lives
freely and with confidence”*

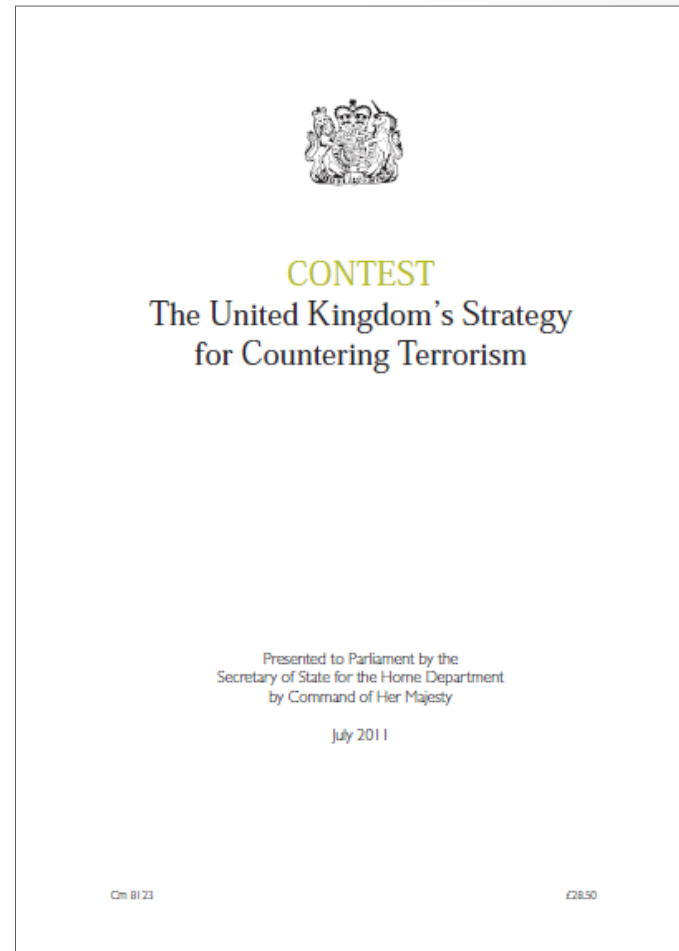
CONTEST aims to reduce the risk we face from terrorism so that people can go about their lives freely and with confidence.

This is made up of the four Ps = Protect / Prepare / Pursue / and Prevent

CONTEST / PREVENT

CONTEST has four areas of work:

- **Prevent** – aims to stop people becoming terrorist or supporting terrorism
- **Pursue** – aims to disrupt and stop terrorists attacks, wherever possible by prosecuting those who have engaged in terrorist related activity
- **Protect** – aims to strengthen our protection against a terrorist attack in the UK or interest overseas and reduce our vulnerability
- **Prepare** – aims to mitigate the impact of a terrorist attack where that attack cannot be stopped



Safeguarding & Channel

Protecting and supporting vulnerable individuals susceptible to radicalisation



Convicted Offenders

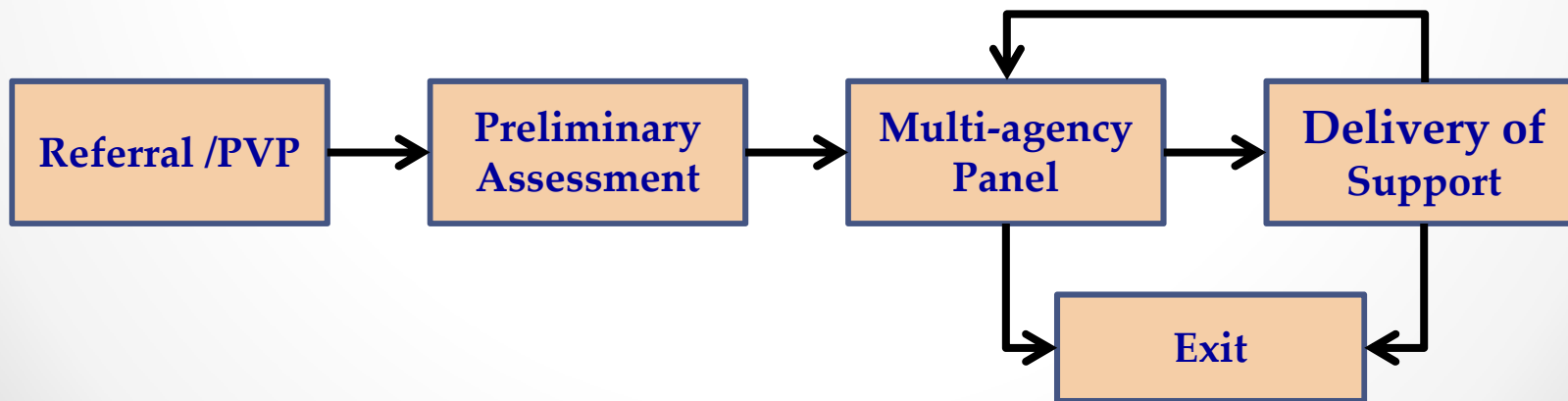


Early Intervention

CHANNEL

Channel is a multi-agency approach to protect people at risk from radicalisation.

- It uses existing collaboration between the police, statutory partners and the local community to:
 - ✓ **identify** individuals at risk of being drawn into terrorism or who are vulnerable
 - ✓ **assess** the nature and extent of that risk; and
 - ✓ develop the most appropriate **support plan** for the individuals concerned
 - ✓ operates in **pre-criminal space** (before and act)



Counter-Terrorism & Security Act

We all have:

“due regard to the need to prevent people from being drawn into terrorism”

This is done through a multi-agency approach through:

LOCAL AUTHORITIES

POLICE

COMMUNITY AND VOLUNTARY SERVICES

EDUCATION

PRISON SERVICE

YOUNG OFFENDING TEAMS

EMERGENCY SERVICES

UK BORDER AGENCY

HEALTH

SOCIAL SERVICES

ADULT AND CHILDREN SERVICES

• PROBATION SERVICES •

Referrals

Referring people who may be suspect –
Your role as a tutor could help:

Activity: Watch Video: Referrals:

From: Govt Wrap 1V referrals: England and Wales

**Make observational notes report back to
group for discussion**

Referrals

Referring people who may be suspect –
Your role as a tutor could help:

Who can make a referral?

Anyone can make a referral.

Referrals come from a wide range of partners including:

- Education – you as a tutor can make a referral
- Health
- Youth Offending Teams
- Police
- Social Services

What happens with the referral?

Referrals are first screened for suitability through a preliminary assessment by the Channel Coordinator and the local authority.

If suitable, the case is then discussed at a Channel panel of relevant partners to decide if support is necessary.

Interventions

Referring people who may be suspect –
What can you do?

Raising Concerns

Raising a concern or interventions

If you believe that someone is vulnerable to being exploited or of being radicalised, use the college safeguarding or duty of care procedures this will start the Pre-Prevent Procedures and allow concerns to the appropriate leads be raised to Channel Officers if appropriate.

What can you do? Interventions

By Kelly Simcock (Tim Parry Johnathan Ball Foundation for Peace) and Manwar Ali – Jamas



Watch Video:

From: **Govt Wrap 1V - Interventions**

Contact Details

Channel/Prevent Team

DS Maxine Monks Channel Co-ordinator

Office 01772 413029

Mobile 07943050822

CO 12091 Yasmin Zaffar- Channel Officer

Office 01772 412914

Mobile 07949 726039

CEO Lindsay Frew (South-West Lancs)

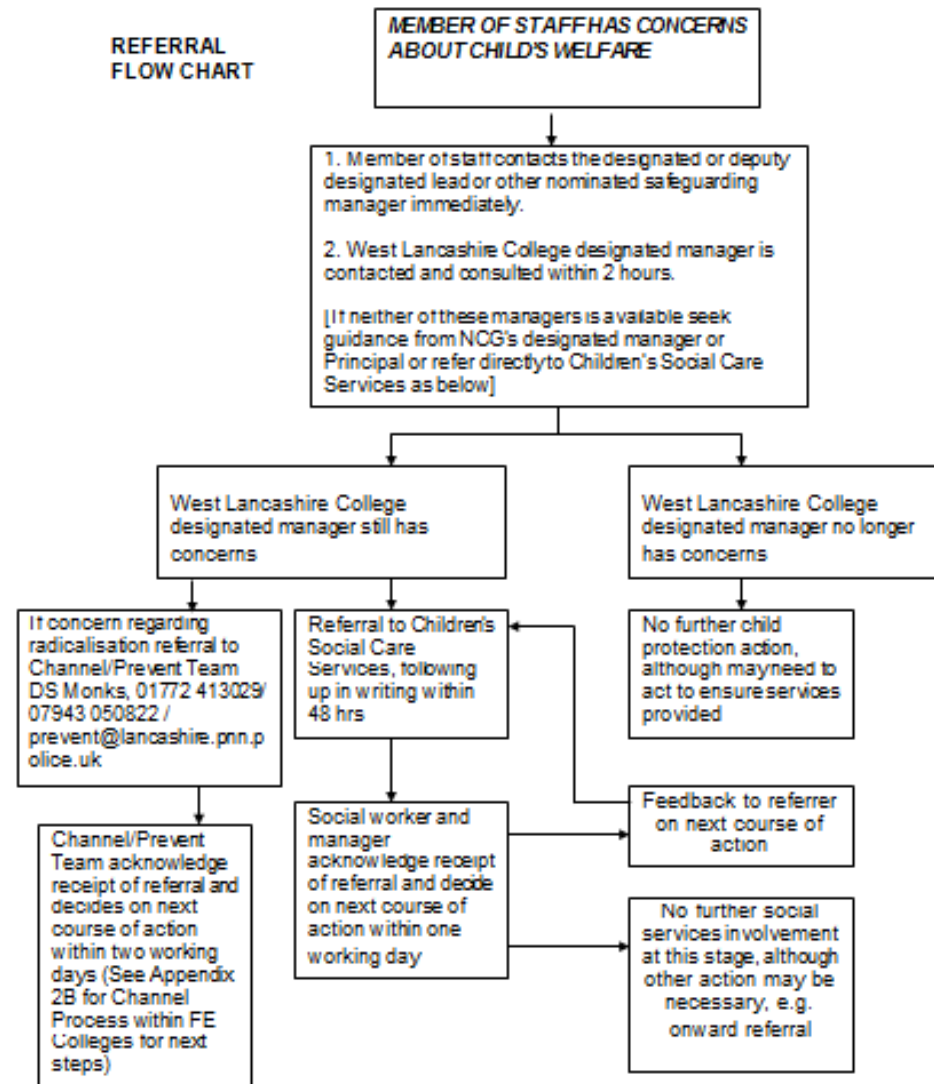
01772 209733 / 07957 463 593

Channel-referrals@lancashire.pnn.police.uk

http://course.ncalt.com/Channel_General_Awareness

WLC Safeguarding - Pre-Prevent Procedures

(Action Planning)



WLC Contact Details

(Action Planning referral team)

Child Protection Procedures - List of Useful Names and Contact Details

Newcastle College Group – Internal Contacts

Name	Title	Organisation	Tel. Number
NCG DESIGNATED MANAGER			
Lynne Griffin	Group Director Human Resources & organisation Development	NCG	0191 200 4000
DIVISIONAL DESIGNATED SAFEGUARDING LEAD			
Sheila Minchin	Director of Quality & Support	West Lancashire College	01695 52361
DEPUTY DIVISIONAL DESIGNATED SAFEGUARDING LEAD			
Jane Hines	Head of Marketing & Student Services	West Lancashire College	01695 52316
NOMINATED SAFEGUARDING MANAGERS			
Michelle Brookes	Learner Zone Manager	West Lancashire College	01695 52383
Sue Lewin	Nursery Manager	West Lancashire College	01695 52559
Daniel Gorman	Head of Health Care, Education and Foundation Learning	West Lancashire College	01695 52382
Jane Kasper	Interim Programme Area Manager	West Lancashire College	01695 52492
Mike Cooney	Tutor	West Lancashire College	01695 52394
Galina Jordanova Bhebe	Learning Support Assistant	West Lancashire College	01695 52488
Jeff Hilton	Tutor	West Lancashire College	01695 52572
HUMAN RESOURCES			

Other useful contact details – external



Name	Title	Organisation	Tel. Number
ADULT SOCIAL CARE SERVICES (Office Hours)			
	Duty Team	Lancashire County Council	0300 123 6721
INITIAL RESPONSE SERVICE (Out of Office Hours)			
	Duty Team	Lancashire County Council	0300 123 6721
POLICE PUBLIC PROTECTION UNIT (located at local police station) (PPU)			
	Skelmersdale Police Station	Lancashire Constabulary	01695 466335 0845 125 3545 (out of hours)
LOCAL AUTHORITY DESIGNATED OFFICER (LADO)			
	Tim Booth	Lancashire County Council	01772 536694
REFERRAL TO CHANNEL PREVENT TEAM			
	DS Monks	Lancashire Constabulary	01772 413029 / 07943 050822 prevent@lancashire.pnn.police.uk

Other Useful Contact Details - External

WLC Safeguarding - Referral Form

Comes under Child Protection
Procedure and Vulnerable
Adults

Used to assess vulnerable
learners

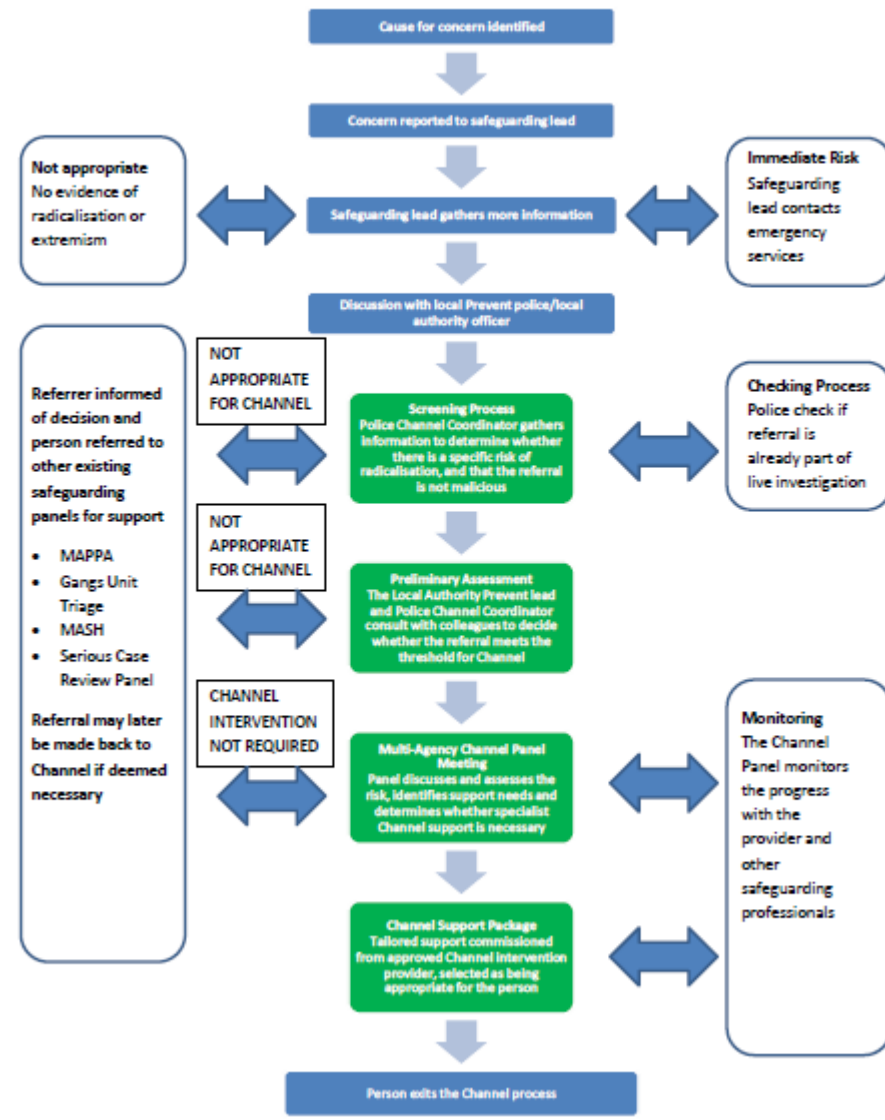
WLC Safeguarding Referral Form

Name of Complainant	
Name of Adult who has allegedly been abused	
Date of alleged incident	
Time of alleged incident	
Location of alleged incident	
Account of alleged incident	
Description of any injuries observed	
Reporting Staff Name	
Reporting Staff Signature	
Date	
Action/Outcome to referrer	

Channel Process within FE Colleges

<http://www.preventforfeandtraining.org.uk/sites/default/files/The%20Prevent%20Strategy%20and%20the%20Channel%20Programme%20in%20FE%20Colleges.pdf>

The Channel Process within FE Colleges



Prevent Duty Risk Assessment / Action Plan
 Your Institution will have to develop an action plan
 see <http://www.preventforfeandtraining.org.uk/>

Prevent Duty Risk Assessment/Action Plan
with example of possible content

<u>No</u>	<u>Prevent Vulnerability/Risk Area</u>	<u>Risk Y/N</u>	<u>Action taken/already in place to mitigate/address risk</u>	<u>Owner</u>	<u>When</u>	<u>RAG</u>
1	LEADERSHIP Do the following people have an good understanding of their own and institutional responsibilities in relation to the "Prevent Duty"? <ul style="list-style-type: none"> ➢ Board of Governors ➢ SMT ➢ Staff ➢ Student Union ➢ Safeguarding team 					
2	Partnership 1) Is there active engagement from the institution's Governors, SMT, managers and leaders? 2) Does the institution have an identified single point of contact (SPOC) in relation to Prevent? 3) Does the institution engage with the BIS Regional Prevent Coordinator, Local Authority Police Prevent Leads and engage with local Prevent Boards/Steering Groups at Strategic and Operational level?	Y	1) <u>Governors & SMT provided with briefing by BIS HE/FE Prevent Coordinator on 1/2/15. Arrangements in place to repeat this briefing at SMT Development Day or sooner as necessary.</u> 2) <u>The Prevent Lead for ***** is the Safeguarding Lead ***** He/she is responsible for oversight of the Prevent Action Plan & update to SMT.</u> 3) <u>The institution, thro' the Prevent Lead, meets regularly with the BIS Prevent Lead</u>			

Summary

Prevent duties include:

- Establishing a single point of contact for Prevent
- Assess risks of learners, vulnerable adults being drawn into terrorism – **create and use referral forms**
- Develop and action plan to reduce risk – **create a Prevent Duty Risk Assessment for your institution**
- Train staff (and learners) to recognise radicalisation and extremism
- Refer vulnerable people to the Channel process if necessary – contact **Channel Co-ordinator**
- Prohibit extremism speakers and events that promote radical ideology

Ofsted Inspection Findings

Background

- Our first inspection under new Ofsted framework
- Inspectors visited 14 September – 8 October
- Reviewed paperwork, discussed issues with staff at all levels, observed some frontline practice
- Report published 27 November

Inspection Judgements

- Help and Protection Inadequate
- Children Looked After Requires Improvement
 - Adoption Requires Improvement
 - Care Leavers Inadequate
- Leadership, Management & Governance Inadequate

Overall judgement: inadequate

Recommendations

- Leadership, management and governance
- Performance management and data
- Workforce development
- Social work practice: recording, levels of experience, compliance, use of chronologies, diversity, oversight of children in need, use of written agreements, private fostering, permanence, Personal Education Plans

Recommendations

- Independent Reviewing Officers' challenging of practice
- Adoption: drift, delays and sufficiency, timely life story work
- Care leavers: levels of support, entitlements, Employment Education and Training, and pathway plans

Positive findings

Support to frontline staff

- Social workers receive regular supervision and value the support they receive from frontline managers
- Line managers routinely record discussions and decisions regarding individual cases

Educational attainment/attendance

- There are strong indications that as a result of good partnership working the attendance rates and behaviour of vulnerable children, including looked after children, have improved

Positive findings

Support to vulnerable children and young people

- The authority has a coherent strategy to monitor children who miss education
- Training and briefings are available to support professionals and identification of neglect is improving, with an increasing number of children subject to a child protection plan
- In most cases seen, risks to children and young people from child sexual exploitation, alcohol and substance misuse were appropriately identified and relevant help offered

Positive findings

Support to vulnerable children and young people

- Children's centres contribute well to early help provision in Lancashire. They know the population in their areas well, understanding the challenges that the parents and their children face.
- The council, supported by the Local Safeguarding Children Board, has a strong focus on identifying and tackling child sexual exploitation.

Positive findings on Children & Young People's Trust

- The local authority has formed effective working relationships with partners on strategic boards, including the Local Safeguarding Children Board, Children's Trust, and Health and Wellbeing Board. Children's needs are duly considered and priorities across boards are appropriate and well aligned.
- The county council Children's Trust, revised in late 2014, has effective links with other strategic bodies, and appropriate representation from all partner agencies and the Local Safeguarding Children Board

Positive findings on Children & Young People's Trust

- The Children's Trust is the overarching board for the five local partnership boards that operate within Lancashire. The local boards provide an effective structure for partners to consider the priorities of the Children and Young People's Plan and how these relate to young people in their area
- Since being formed approximately 12 months ago, local boards have established effective membership and have developed action plans to identify and respond to the needs of young people in their area, although it is as yet too early for them to demonstrate the impact of their work.

What we have done so far?

- £5m additional investment approved by Cabinet
- Children Awaiting Adoption Service now integrated within the Adoption Service
- Work taking place with New Belongings to improve Care Leavers Service
- Recruited additional 27 social workers and 9 Managers to reduce caseloads in Children's Social Care
- New performance management system with weekly, monthly and quarterly reporting.

What we have done so far?

- Responded to concerns about data quality by commissioning an external provider to review current systems and help improve outcomes
- Monthly Performance Clinics to monitor performance across all areas
- Revised and distributed new social work standards
- Reviewed and distributed guidance on: strategy discussion; written agreements; use chronologies; forced marriage and honour based violence; private fostering; assessments; recording

What we have done so far?

- Aligned our audit grading system in line with Ofsted judgements
- Focus on children in need and care leavers for quality assurance
- Revisited other councils with practitioners to look at how they are using their case management system

Next steps

- Independent chair to oversee an improvement board
- Improvement Plan to be developed and implemented
- Children and young people's views and experiences to be inform improvements
- Regular monthly monitoring of progress by Department for Education
- Further inspection in due course



Young Enterprise

Sarah Tinsley/Sally Hopkins

Young Enterprise Managers,
Lancashire

Who are we?

- UK's largest business and enterprise education charity.
- We work with Children from 4 through to Young Adults up to the age of 25
- Each year we empower 250,000 young people
- Network of 5,000 volunteers
- 3,500 Organisations
- Delivering up to 4 million learning hours each year



What do we do

- Support young people between 4 and 24
- Develop Skills for work and life
- Bridge the gap
- Unleash talents
- Build Self esteem, Increase Resilience & Confidence
- A “Can do” approach



How?

- Informing
- Mentoring
- Real experience
- Inspiring
- Concentrating on Employability
- Focus on being 'Work ready'



Secondary Focus

A broad and balanced curriculum incorporating PSHE.

Careers education and Inspiration

Support with Ofsted judgements

Opportunities, for pupils to begin taking responsibility for experiences in later life.



The Primary Concern

A broad and balanced curriculum incorporating PSHE.

Mathematics

Support with Ofsted judgements

Opportunities, for pupils to begin taking responsibility for their own learning



Supporting Careers and Inspiration

- Every student should leave school prepared for life in modern Britain.
- A rich provision of classroom and extra-curricular activities
- Develop a range of character attributes,
- Inspire young people
- Build strong links with employers
- Develop entrepreneurial skills for self-employment





the business of life

Core Primary



Suite of 6 Programmes

- Children are taken on a Journey
- Initially in picture book style
- Ourselves and Our Families
- Our Community and Our City
- Our World and Our Nation
- Learning by doing



Developing an understanding

- Diversity
- Community Cohesion
- Employment
- Personal Finances
- Democracy
- Government and taxes
- British Values
- Global Trading





5 *Five* challenge



- Month Long challenge
- Work as individuals
- Or as part of a team
- Weekly challenges
- Online support
- National competition
- Making profit





the business of life

Our Business



The Challenge

- Work in teams to run a business
- Be a business manager
- Sell on a stall
 - Anniversary Celebration
 - You get to keep the profits?
- Who will have the most successful business?
 - 5 awards to win
- Have fun!



What is a **business**?

Product

Service

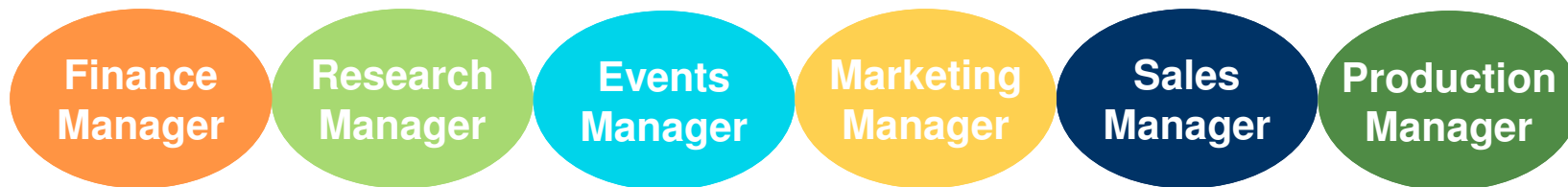
Intreprenneur

Entrepreneur



Manager Roles

- Choose your preferred role
- Explain to your team
 - Why are you interested in this role?
 - What skills do you have?
 - Why would you be good at the job?
 - What things that you have done before that would help you in this role?





Young Enterprise
Company/Team Programme
2015/16

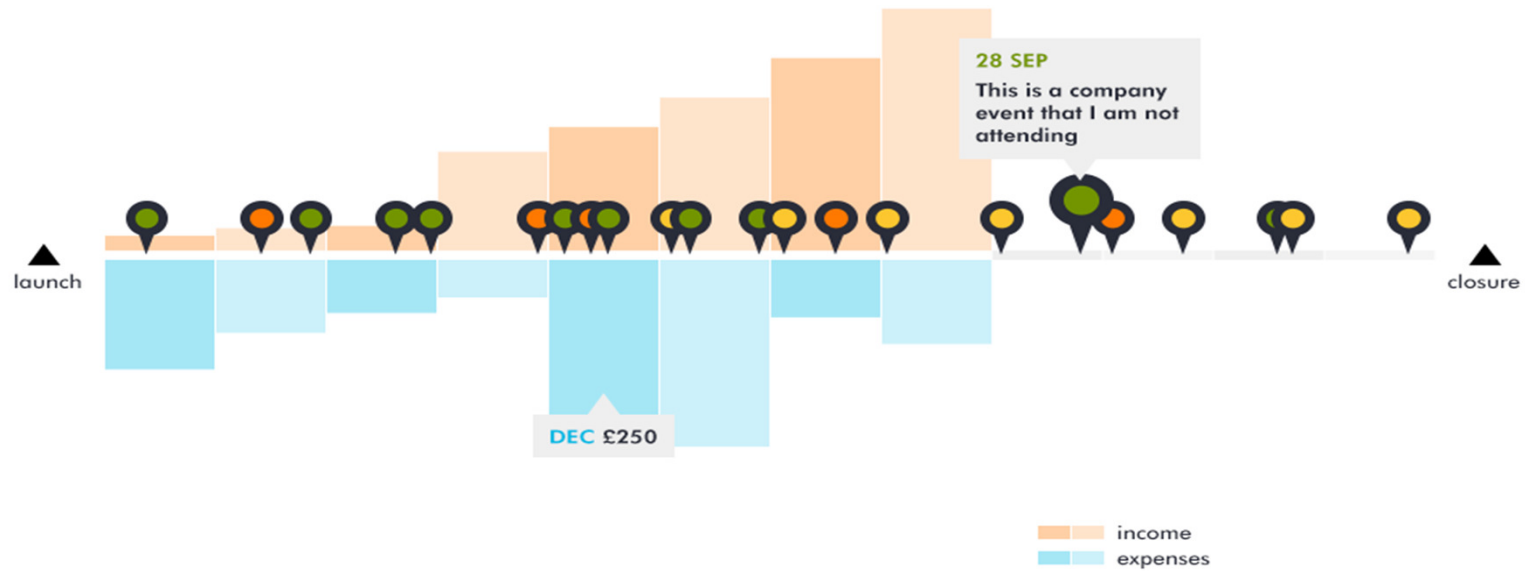
the business of life

About Company/Team Programme

- Real business
- From September to July
- Elect a board of Directors
- Raise capital selling up to £500 in shares
- Plan, design and develop a legal product or service to sell to the public
- Prepare a report, trade stand and presentation for celebration event early May
- www.y-e.org.uk



The Origin Company
Day 245



3. Hold your first meeting

Lorem ipsum dolor sit amet, consectetur adipiscing elit. Nunc id consequat lectus. Sed posuere lobortis lacinia. Donec viverra dolor ac lorem luctus viverra. Nulla at scelerisque lectus. Etiam mollis neque pretium, commodo diam eget, commodo ante.



Pellentesque nulla odio, lobortis sed nisl vel, pulvinar pulvinar elit. Cras vulputate metus orci, a consectetur nisi mollis quis. Quisque placerat nisl in risus commodo, et lacinia risus rutrum. Vestibulum vel vulputate orci. Duis varius augue et pharetra rutrum. In euismod sit amet sapien a gravida. Nunc nec enim vel metus lacinia posuere sed eget lorem. Donec feugiat, turpis eget blandit ullamcorper, erat sapien faucibus quam consectetur nisi mollis quis.

Praesent suscipit ipsum justo, imperdiet congue tortor sagittis id. Sed eu metus eu ligula aliquet varius. Vestibulum vel turpis nec augue mattis vulputate et eu nibh.

ACTIONS

- 1. Register your company ✓
- 2. Schedule your first meeting ✓
- 3. Hold your first meeting ✓
- 4. Take a quick site tour ✗
- 5. Complete your company profile ✗

Doing it for real



Headlines

- Earn a third more than peers
- Twice as likely to start own business
- More successful in careers than non-participators
- Young Enterprise developed their life skills
- Felt Young Enterprise activity best prepared them for work





the business of life

Team Programme



Team Programme

Who is it for?

Suitable for students 15-19+

- Mild to Moderate Learning Difficulties (but does not exclude any SEND students - just materials aimed at this level)
- Primarily for those Studying for Entry Level of Level Qualifications



Team Programme

At a glance

- **Teacher Led**
- Students set up and run a business
- 1– 2 years
- Supported by DBS checked Business Volunteers (BA guide at YE Online)
- Supported by Young Enterprise Manager
- Designed to be flexible & meet a range of abilities and needs
- Termly TP competitions





the business of life

For all ages.....

- Young Enterprise Masterclass
- Module based activity



Masterclass

- Project Nebula
- Space Rocket Challenge
- Desert Island
- Airline
- Small Business Masterclass
- Learn to Earn/ Personal Economics
- Modules



KS2 Junior Masterclass

- Project Nebula



KS2 Masterclass

- Space Rocket Challenge



KS3 Masterclass

- Desert Island



Secondary/FE Masterclass

- Airline
- Small Business
- Chocolate
- Sports



Module based activity

- Learn to Earn
- Personal Economics
- Employability
- Life skills





the business of life

Life Skills
Employability
Raising Aspirations
Building Confidence
Creating a better future for the young people of Lancashire





the business of life



In a nutshell

- From 4 to 24
- Compatible with Nat Curriculum
- Supporting Ofsted judgements
- Learning by doing
- Promoting a “Can do” attitude
- Flexible approach.... Offers something for everyone